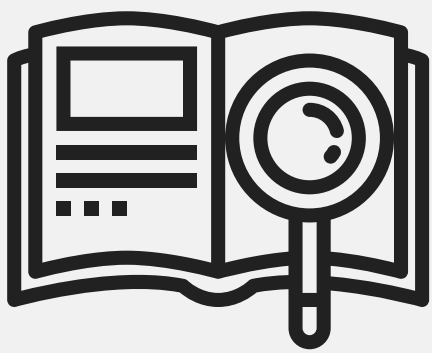


Problem-Based Learning

Here is the structure we will be following after receiving our case scenarios. We will be going between large and small groups.

READ & RE-DEFINE THE CASE SCENARIO

Read over the scenario, then think about what it's really saying and what problems might arise from the case. Don't just summarize it, think beyond it.



FACT FINDING

Looking at the case scenario:

- Identify words that you don't understand or are unfamiliar.
- Identify missing information that might help you understand better.
- Is this a simple answer (looking up a word) or a future Learning Issue?

HYPOTHESIS GENERATION

Use your previous knowledge, and past experiences to express **educated guesses (hypotheses)**.

Be creative and build off your peers.

Always link your back to the scenario.

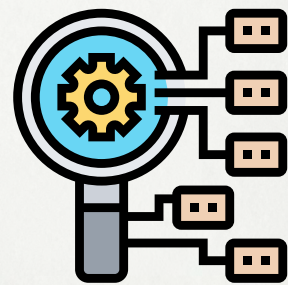


IDENTIFY LEARNING ISSUES (LIs)

Identify what you need to research to prove or disprove the hypotheses.

LIs must be linked to hypotheses so that new information can be applied to the hypotheses and synthesis.

Identify what resources to use and how long the process might take.



HYPOTHESES

If * is true, then I hypothesize that *** might also be true.**

INVESTIGATION & RESEARCH

- Engage in **self-directed** research to learn **relevant** information
- Strive to use **credible academic resources**
- Critically appraise the quality and relevance of the information
- Prepare a one-page typed summary for posting/grading



PRESENTING LIs

- Present efficiently and clearly, prepare to elaborate and answer questions
- You are not expected to be an expert



SYNTHESIS

- Reflect on what the group has learned
- Apply the new, relevant knowledge back into the scenario
- Address prior hypotheses
- Expand on the case
- Create new meaning

