

# Specimen Processing

Knowledge check

# Join the session



# 1. What components are found in SST/gold top tube after centrifugation?

1



A. Serum and red cells

0

B. Serum, buffy coat and red cells

0

C. Plasma and red cells

0

D. Plasma, buffy coat and red cells



## 2. Which of the following is a pre-analytical error:

0

A. Collection tubes are not expired

0

B. Chemistry specimen delivered immediately to the lab

1

C. 1.0mL of whole blood collected in 5.0mL specimen container

0

D. Patient label on specimen collection container and requisition match



1

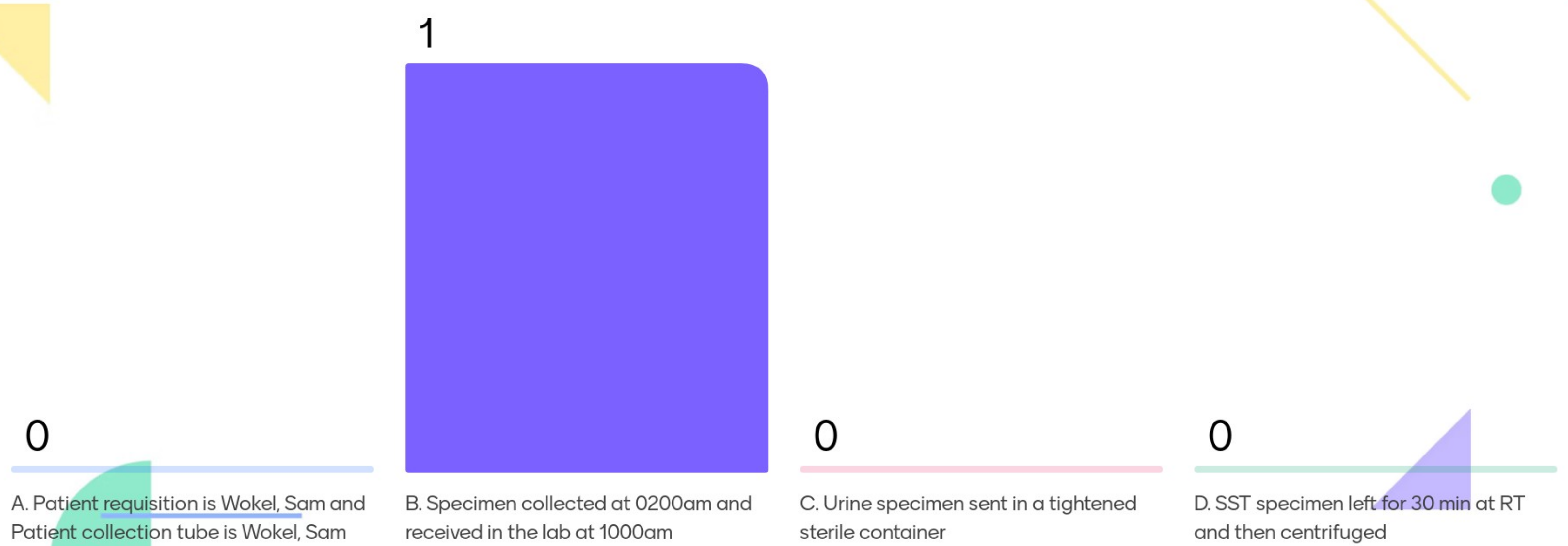


### 3. What anticoagulant is commonly received in clinical chemistry?





# 4. Which of the following incidents would require a NCR?



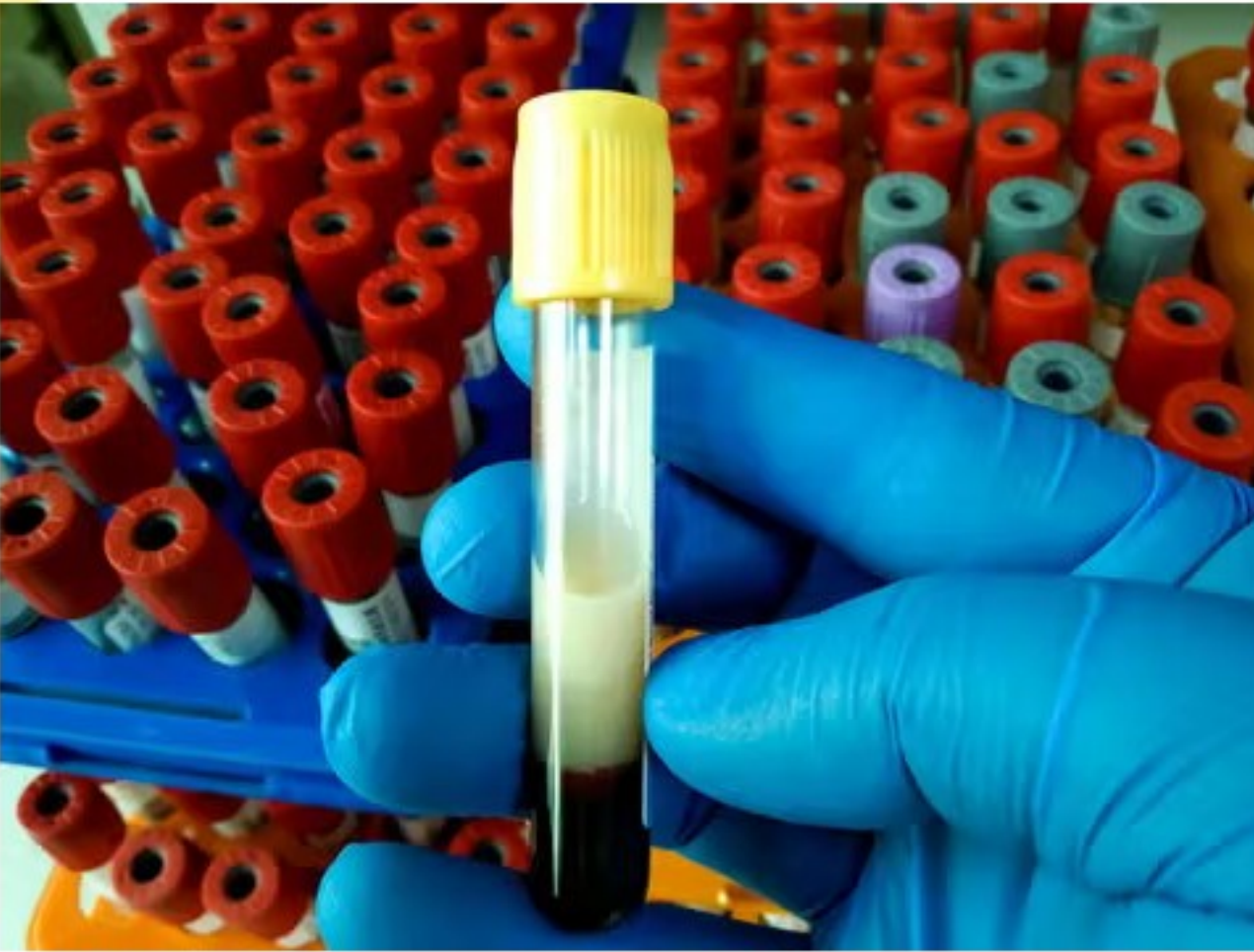
A. Patient requisition is Wokel, Sam and Patient collection tube is Wokel, Sam

B. Specimen collected at 0200am and received in the lab at 1000am

C. Urine specimen sent in a tightened sterile container

D. SST specimen left for 30 min at RT and then centrifuged

5. What HIL grade is the following specimen:



0

A. H=0, I=0, L=0

0

B. H=1, I=0, L=1

0

C. H=0, I=1, L=4

1

D. H=0, I=0, L=3



1

